

MOST DANGEROUS PLACE IN REFRIGERATOR

I just read an article on-line related to the "most dangerous" place in our refrigerators. I thought it would be of benefit for you.

Our refrigerator salad drawers can be very contaminated with a variety of organisms. In some instances, some of those drawers tested contained 750 times the level of bacteria considered safe. These drawers can potentially contain such bugs as E. coli, salmonella, and listeria (the organism found on cantaloupe recently which has caused several deaths and many illnesses).

It is important to keep the interior temperature of the refrigerator below 39 degrees (F). Problems can increase when the air temperature increases in summertime or when leaving the refrigerator door open. It is also important to clean the inside of the refrigerator, including the drawers, using one of many acceptable cleaners, such as Lysol, Clorox, etc. or by just "good old soap and water".

In addition, please dispose of the food in the refrigerator within the timeframe of safety. Perishable items should be thrown out within 3-4 days. Any food found to be breaking down – mold growth, pungent odor, etc., should be immediately thrown away. A great axiom which you have probably heard is: "When in doubt, throw it out!"

Stay safe!!

Suzanne Yeager, RN
Local Health Officer



(Recycling info cont from page 1)

Short List of Materials Not Accepted:

- Wax coated paper or cardboard
- Any material with substantial food debris (small trace amounts of food is ok).
- Plastic bags of any kind
- Batteries of any kind
- Styrofoam of any kind
- Light bulbs of any kind
- Mirrors, window or auto glass, porcelain, ceramics, glass cookware/bake ware, microwave oven trays, drinking glasses, perfume/ cologne bottles
- Wood or Yard Waste
- Unnumbered Plastics
- Coat Hangers, Wire
- Household items such as toasters, cookware, bake ware, electronics, appliances, etc.
- Hazardous or toxic substances.
- Items containing or having debris and residue containing hazardous or toxic substances such as paint cans with wet paint, motor oil containers, gasoline cans, glue, petroleum products, etc.
- Aerosol cans

Visit us at: www.paxtang.com

PAXTANG POST

PAXTANG POST 2012

January, February
& March 2012

Volunteers are needed to deliver the Post papers. Anyone available should let the Borough Office know by calling (717) 564-4770



Borough Officials Contact List

MAYOR
Keldeen Stambaugh
558-8373

COUNCIL PRESIDENT
John Ninosky
564-1323

COUNCIL VICE PRESIDENT
Denny Beaver
564-9566

BOROUGH MANAGER/CHIEF
Ken Beard
564-4770

Paxtangchiefmanager@comcast.net

TAX COLLECTOR
Helen Koser
564-6747

FIRE CHIEF
Todd Zwigart
Office: 564-0520
paxtangfire@comcast.net

SOLICITOR
James Feinour, Esq.
(Nauman, Smith)

ENGINEER
Max Shradley (Retiree)

**BUILDING INSPECTOR
CODES ENFORCEMENT
ZONING OFFICER**
Ed Wenger
564-4770

SECRETARY TREASURER
Faye Clark
564-4770

SHADE TREE CHAIR
Rodger Fail
564-2357

PLUMBING INSPECTOR
Timothy Folk

ADMINISTRATION
Beaver, Chair 564-9566
Borne-Fuller
Kipp

HIGHWAY
Seneca, Chair 564-5444
Panza
Patackis

POLICE
EMERGENCY 911
NON-EMERGENCY
558-6900

PROPERTY & RECREATION
Kipp, Chair 564-6877
Beaver
Panza

PUBLIC RELATIONS
Panza, Chair 564-5374
Borne-Fuller
Patackis

PUBLIC SAFETY
Borne-Fuller, Chair 558-5926
Beaver
Seneca

HEALTH & SANITATION
Patackis, Chair 561-1250
Seneca
Kipp

MUNICIPAL BUILDING
3423 Derry Street
Harrisburg, PA 17111
(717) 564-4770
Paxtangborooffice@comcast.net

CALENDAR OF EVENTS

January

- 1 Happy New Year
- 3 Council Reorganization
to be held at 6PM in gym

February

- 11 Lions Pankcake Breakfast

March

- 31 Women's Club

OUR ADVERTISERS

On the back of this issue of "The Post", you will see advertisers who graciously paid to put their ad there. Some for just one time, others for the whole year.

We are grateful to them. Whatever they paid, is saving your tax dollars to put this paper in your home.

If you can in any way utilize their products or services, please do so. It is their pride in Paxtang that led them to support us with an ad.

Beginning mid December we again will be seeking ads for the next year.

Prices will remain; 1 issue \$40
1 year (4 issues) \$140.



*As with all trash, recycles need to be bundled, identified and weigh less than 50 lbs.

Did you Know?
Customers of Waste Management Enjoy Single-Stream Recycling.
All of your recyclables can be placed together in the same container!
No paper and commingle sorting required!

The following can be place in your recycle container and mixed all-together:

- Aluminum food and beverage containers with the food debris removed to include aluminum foil and pie/baking tins. Labels do not need to be removed.
- Glass food and beverage containers with lids and food debris removed: Clear, Brown, Green. Labels do not have to be removed.
- Natural and pigmented plastic **narrow-neck** containers with symbols 1,2,3,4,5,6,7 (milk bottles, water bottles, detergent bottles, shampoo bottles, bleach bottles, etc.) Lids and food debris removed. Labels do not have to be removed.
- Ferrous (Iron, steel, tin) cans with food debris removed. Labels do not need to be removed
- Newsprint - black and white or pigmented. Do not place in plastic bags!
- Construction paper, kraft paper, cereal boxes, show boxes or similar.
- Printer paper, computer paper, copy paper.
- Junk mail, magazines, catalogs and phone books.
- Corrugated cardboard

(see page 4 for list of materials not accepted)

Phil's BODY SHOP & AUTO PAINTING
"Quality at a Good Price"

- Collision Repair
- All Makes & Models
- Tinting & Rental Available
- Auto Painting
- Rust Repair
- Detailing

FREE ESTIMATES

Wally Carper & Dave Bahajak - Owners
(717) 564-9202 Fax: (717) 564-9208
3715 D Derry Street, Harrisburg, PA 17111
www.harrisburgbodyshop.com

DIVORCE BANKRUPTCY

CHARLES E. PETRIE
ATTORNEY AT LAW

FULL RANGE OF FAMILY LEGAL SERVICES

REAL ESTATE WILLS & ESTATES

PetrieLaw@AOL.COM

3528 Brisban Street Harrisburg, PA 17111 Phone (717) 561-1939 Fax (717) 561-4121

Best Wok

OPEN HOURS
Sunday: 11:30am - 10:00pm
Mon. - Thurs: 10:30am - 10:00pm
Fri. & Sat: 10:30am - 11:00pm

Specialize in Szechuan • Hunan • Cantonese Cuisine
Dine In & Take Out

3407 Derry Street Harrisburg, PA 17111 Tel 717-901-5608 Fax 717-901-5607

W.S. Miller AND SONS INC.

3001 Pike Street Harrisburg, PA 17111
717-564-0870
PA 588 717-564-2432 (fax)
www.wsmiller.com

GENERAL CONTRACTOR

ADVERTISE YOUR BUSINESS HERE

STEPHEN J. WILSBACH
SUPERVISOR

Neill FUNERAL HOME, INC.

STEPHEN J. WILSBACH, SUPERVISOR 3001 DERRY STREET HARRISBURG, PA 17111 (717) 564-2633 FAX: (717) 561-8918

KEVIN J. SHILLABEE, SUPERVISOR 3402 MARKET STREET CAMP HILL, PA 17011 (717) 737-8728 FAX: (717) 737-1889

RETTEW

We answer to you.

4011 Reservoir Road, Suite 111 Mechanicsville, PA 17057-1557

Engineers
Planners
Surveyors
Landscape Architects
Environmental Consultants

PIP Printing and Marketing Services HARRISBURG

www.piphbg.com

- POSTERS
- BANNERS
- INVITATIONS
- BUSINESS CARDS
- GRAPHIC DESIGN

4790 Derry St Harrisburg, PA 17111
Phone: (717) 564-4143 Fax: (717) 564-4127

ADVERTISE YOUR BUSINESS HERE

ADVERTISE YOUR BUSINESS HERE

PAXTANG CEMETERY
ESTABLISHED 1898

ALESIA A. SKINNER
Owner

401 Kelso Street Harrisburg, Pennsylvania 17111
Phone: 717-564-2110 • Fax: 717-564-2188 • Cell: 717-307-6134

Web site: www.paxtangcemetery.com
Email: askinner401@verizon.net

VN VISITING NURSE ASSOCIATION OF CENTRAL PENNSYLVANIA
A VNA Health System Agency

Crossings Hospice of the VNA

Email: gscicchitano@vnaohs.com 717-233-1035 x126
3315 Derry Street Harrisburg, PA 17111 Cell 570-898-1431 Fax 717-233-2737
www.vnacentralpa.org 1-800-995-8207

PAXTANG LEAVES

Notes from the Shade Tree Commission

Early Snow Storm of the 2011-2012 Winter

Autumn was still in full swing through much of October. Many of our trees retained their leaves, the weather was warm for this time of year, and winter storms were hardly in our thoughts.

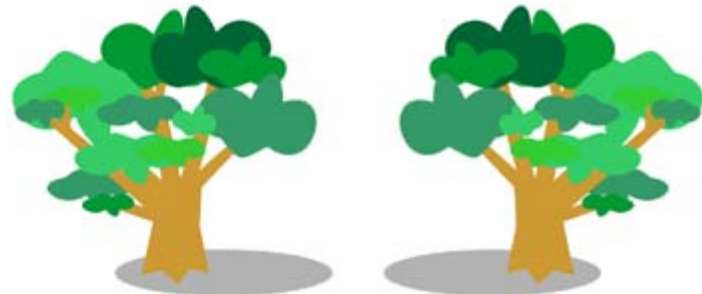
Then Mother Nature surprised us all on October 29th with a widespread snowstorm that covered parts of the southern Appalachians, the Mid-Atlantic region, and nearly all of New England. While we missed the >12-inch the more mountainous areas received, 6-7 inches of the "fluffy white stuff" did find its way into Paxtang.

However, the large flakes were not light and fluffy—because of the still relatively warm (just below freezing) weather, the flakes stuck together and created a heavy blanket. Nevertheless, bad as that was for shoveling and snow blowers, the poor trees suffered even more because their leaves still clung to them.

Deciduous trees are "smart" in this regard: their leaves have little use in winter because of low sunlight levels, and their large size catches too much snow. The early storm, though, came before many of the leaves had fallen, resulting in many broken branches. In addition, wind gusts toppled thirteen trees across the Borough. North 32nd Street, between Duke and Brookwood Streets, was particularly hard hit. Several downed trees thoroughly blocked the street for several hours.

Clearing the branches and fallen trees after the storm became a major effort for Borough employees Saul Schmolitz and Ed Wenger. It took more than a week to gather the broken limbs (including many from Borough resident's properties) and cart them to the Swatara Composting facility off Orchard Street. In addition, the Borough's tree contractor, Shull's Tree Service, Inc. spent several days removing trees that were irretrievably damaged.

The clean-up from the snowstorm did delay the usual two-month-long annual leaf collection that begins in mid-October and is hopefully completed before the first snowfall. It didn't happen this year. However, with the rapid melting of the snow, and the assistance of 4 to 6 workers from the nearby half-way house and the Dauphin County prison, the vigorously-pursued leaf collection this year was completed by mid-December, before another snowstorm arrived.



2011 Fall Tree Plantings

Thirteen new trees were added to Paxtang's urban forest this fall. Borough employees Saul Schmolitz and Ed Wenger, assisted by members of Paxtang's Shade Tree Commission Rodger Faill and Darlene Kvaternik, and volunteer/Council member Ray Patakis, planted the trees on October 24th at locations around the Borough.

Individual sites were selected that were vacant for more than one year (to allow for settling of soil and disintegration of the previous tree's roots). The species selected for each site depended mainly on the surrounding tree species and the tree lawn width. The underlying philosophy is to maintain a variety of trees along each block and to avoid monocultural planting of a single species. However, the Borough does have a few monocultural blocks, such as the pin oaks along the northern part of Park Terrace, the sycamores/London planes along Sharon Street (east of Paxtang Avenue), and the lindens and pears along Derry Street (west of the creek). Most of our blocks have some variety.

Five species of trees were included in this fall planting: elm, zelkova, red maple, lilac, and bald cypress. A single Red Sunset red maple was planted on Duke Street, and two Japanese Ivory Silk lilacs, both on Prince Street. The other three species have not been previously introduced (or not for many years) in Paxtang's urban forest. Six Princeton elms were planted on Derry and Brisban Streets. Elms, once decimated by the Dutch elm disease, are now more resistant, having been crossed with Chinese elms. The two Green Vase zelkovas, similar to but smaller than elms, were planted, one each on Derry and Brisban Streets. The two bald cypresses, normally thought of a southern swamp tree, work well as a street tree in the Mid-Atlantic region. One each was added to North 30th and Rutherford Streets.

We will be watching carefully to see how these new species develop.

Rodger Faill, Chairman

The Lions Club annual PANCAKE BREAKFAST will be held February 11 from 6AM until 12 noon in the gym of the Municipal Building. The cost is \$5.00 per person (for adults), \$3.00 for children 6-10, kids 5 years and under are free. Tickets may be purchased from any Lion, or at the door. All you can eat pancakes and sausage will be served, washed down with orange juice and coffee. Receipts of this project help to fund the many Borough projects undertaken by the Lions Club throughout the year.



Program Schedule for 2012 Mark your Calendars Members and Non Members Welcome

April 02, 2012 Monday 7:00 P.M.

The Paxtang Historical Society will hold its meeting at the Paxton Presbyterian Church.

August 06, 2012 Monday 6:30 P.M.

The Paxtang Historical Society will hold its Picnic at Borough Park Pavilion North of the Paxton Presbyterian Church, Paxtang Avenue and Simpson Street, Rain or Shine. For those that would like to share, Paxtang Memories by Current & Past Paxtang Residents.

October 01, 2012 Monday 7:00 P.M.

The Paxtang Historical Society will hold its Annual Meeting at the Paxton Presbyterian Church.

December 2012 Tour (Date & Time & Place will be announced)

If you would like to join the Paxtang Historical Society Membership fees are as follows:
Individual (Annual) \$5.00, Family (Annual) \$10.00, Lifetime Member \$50.00
You may contact Shirley or Murv Grunden at 717-561-2620 or murvg@aol.com (Subject PHS)

Have a wonderful Holliday,
Shirley Grunden, President PHS

"T-H-I-N-K S-P-R-I-N-G"

Lenker Manor – Paxtang Womens Club's Annual Spring Luncheon and Fashion Show will soon be here!

Please plan to join us on **Saturday, March 31, 2012** at 11:00 a.m. at The Best Western Central Hotel on East Park Drive, Harrisburg, PA.

We have a fabulous luncheon planned with fashions by **Creative Elegance** of Camp Hill, PA.

There will be lots of beautiful donated baskets to win along with other prizes.

Call your girlfriends, sisters, daughters and mothers. Then, reserve your table now as tickets are reasonably priced and space is limited.

For more information, please call **564-4768** or **564-0250**.

Proceeds will benefit the club's community outreach efforts.



Photos from the December LMPWC meeting featuring Terry Mahoney's "Presepi", Italian Neopolitan Creche figures. These figures are museum quality and some date back several hundred years. They were incredibly beautiful to behold.



Terri Mahoney discusses her creche figures

Rosemarie Kleinsak and Dori Vargo view the display



Gold and Gemstone Earrings

Terri with member Lynn Kipp

